

Women's Madrigal Capes

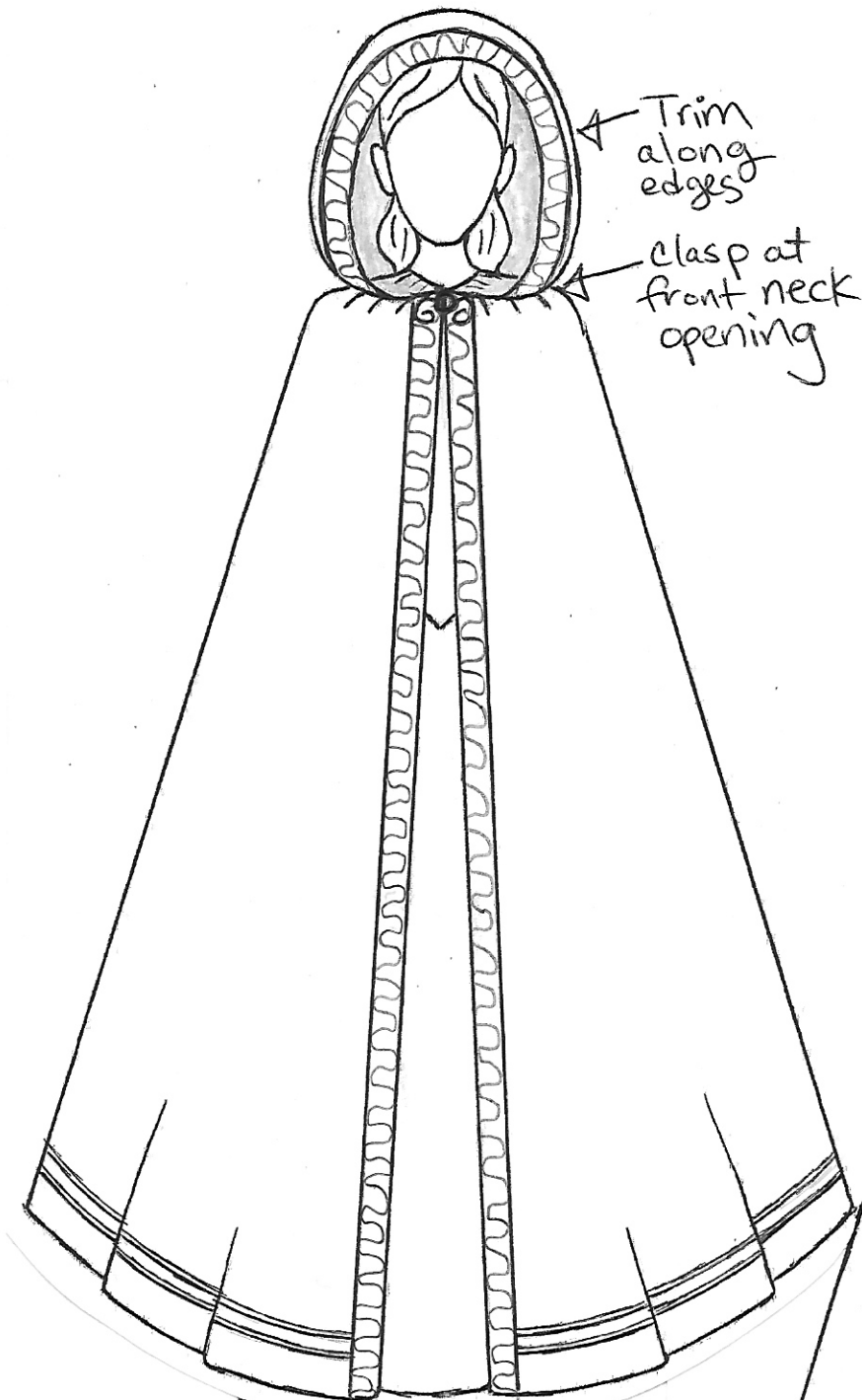
1. **Length:** All women's capes are full length.
2. **Hoods:** All women's capes have hoods. The hoods are fairly large. They are large enough to have a nice drape around the face when worn on the head or to fall nicely to the back when not worn around the face.
3. **Embellishment:** Capes can be decorated with various trims. Capes can be embellished with fur or faux fur, especially along the edges of the front opening and the hood edge.

The following page contains example illustrations of Women's Madrigal Capes

Note: Lining fabric is shaded in gray in the illustrations.

Women's Cape Examples

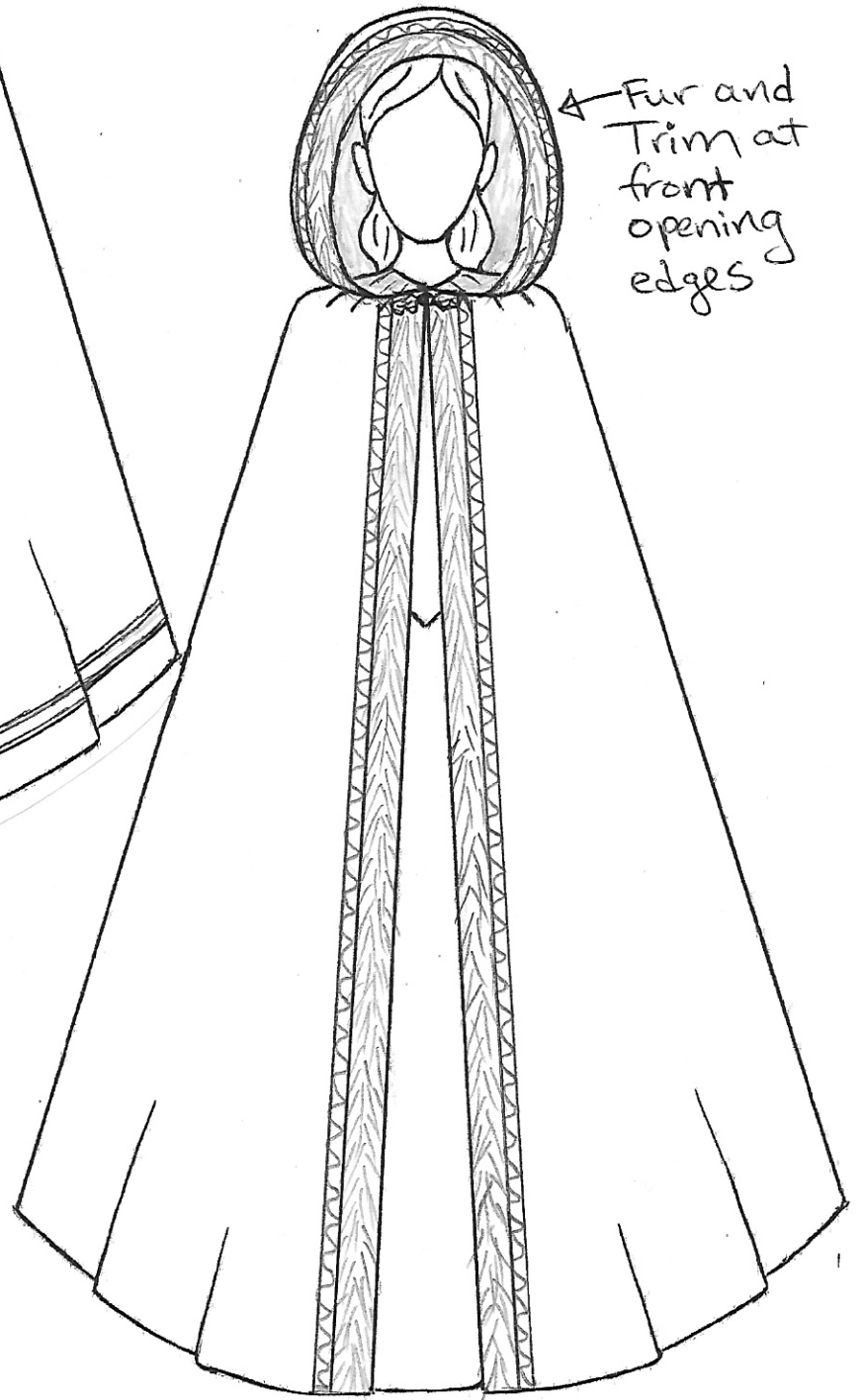
Trim represented by: 



Trim along edges

clasp at front neck opening

↑
Rows of trim around hem edge



← Fur and Trim at front opening edges

Photo examples of Women's Capes:

